

Why is Community Rail important to First Great Western?

Dan Okey, Regional Development Manager (West)



Severnside Community Rail
Partnership  c.i.c

**Devon & Cornwall
RAIL PARTNERSHIP**

Three Rivers

Community Rail Partnership

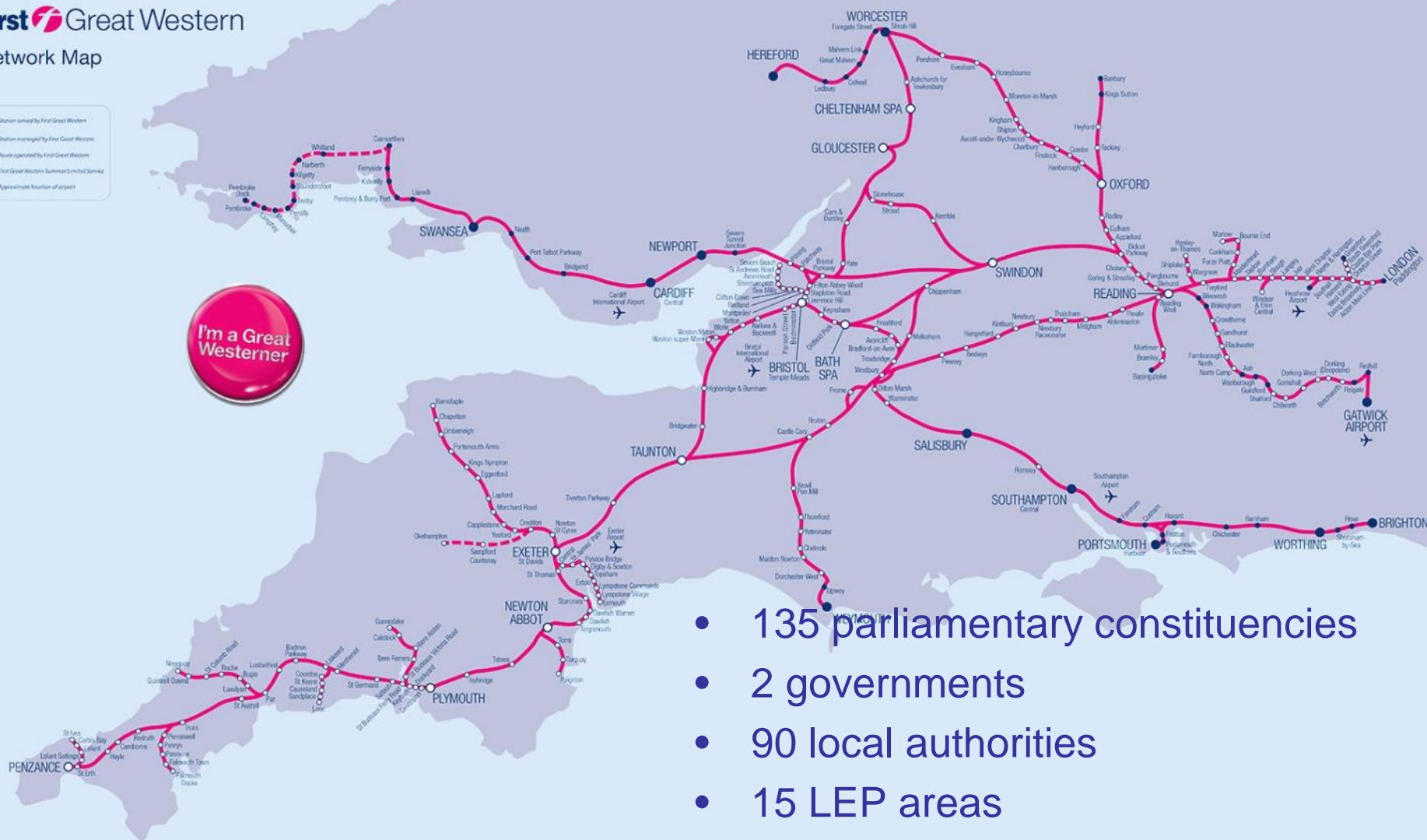
**THE
HEART
OF
WESSEX
LINE**

Overview

- Passenger growth
- Performance
- A line review
 - Being part of the community
 - Working together to shape the future
- FGW's funding and commitment



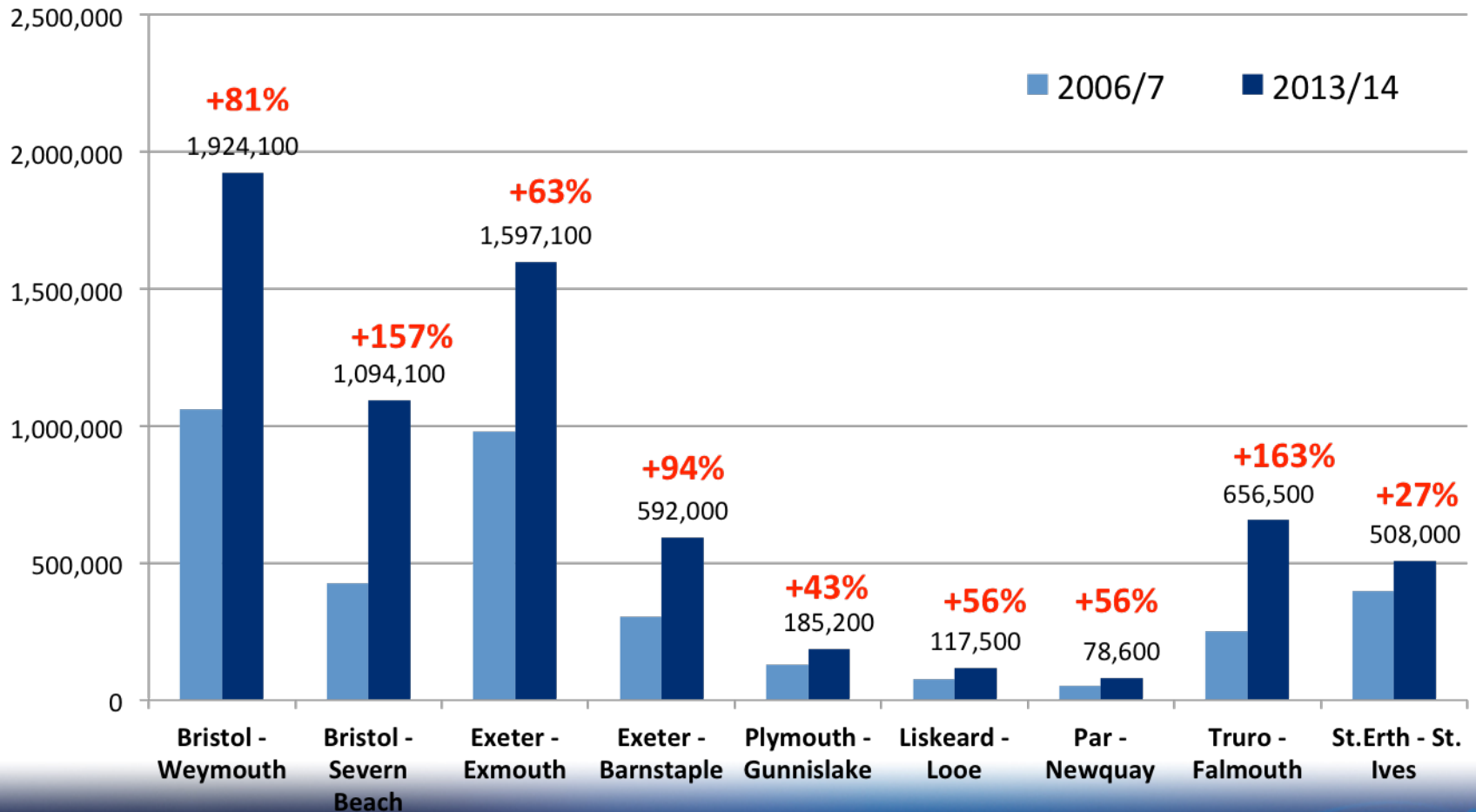
I'm a Great Westerner



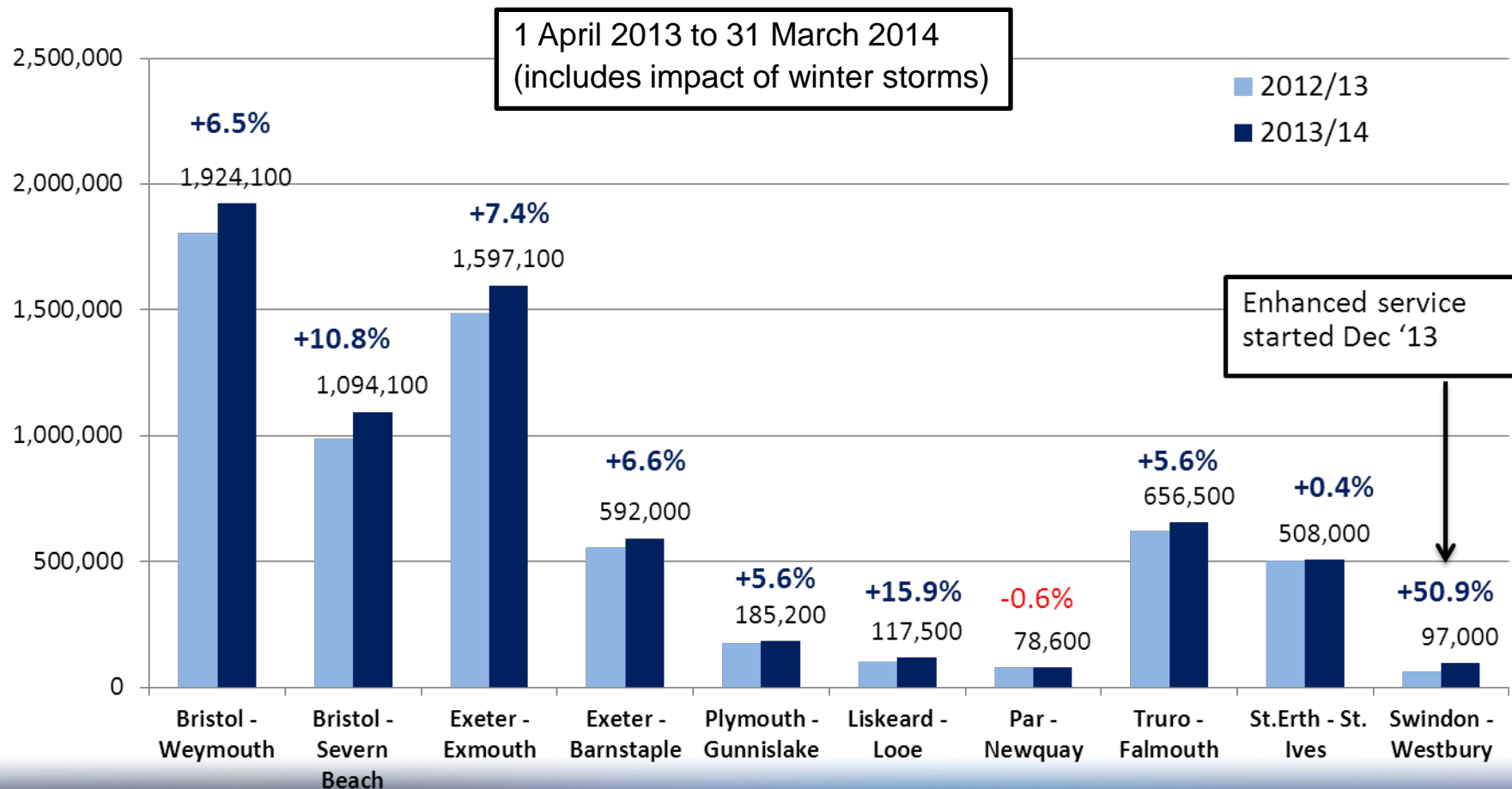
- 135 parliamentary constituencies
- 2 governments
- 90 local authorities
- 15 LEP areas
- 5 Community Rail Partnerships

Passenger growth

Passenger growth since 2006



Passenger growth in 2013/2014



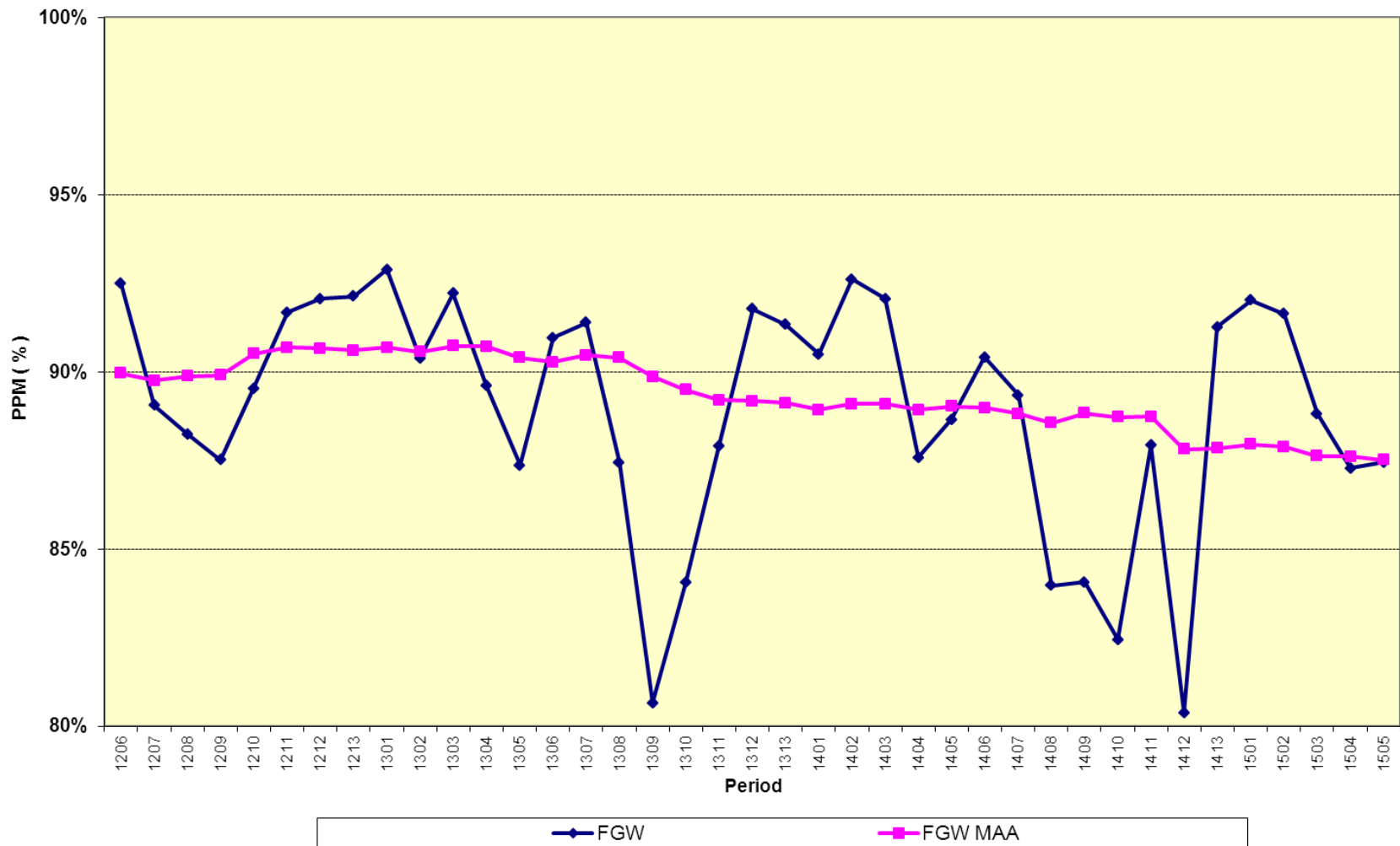
Result = wider benefits

Wider Benefit	Project Example
Less cars on roads / delivering Local Transport Plan aims	Truro – Falmouth branch reducing pressure on A39
Reducing barriers to travel	Better environments (e.g. Exeter Central) and access (e.g. Hayle)
Access to jobs and services	Enhanced service for Paignton
Supporting home to school transport	Working with Grammar schools in Torquay
Promotion of tourism	Bodmin and Wenford Railway integrated ticket offer

DfT study – every £1 spent delivers £4.60 of wider benefits

Performance

FGW PPM Results



Passenger Charter – last 4 weeks

<i>4 weeks to 16th August 2014</i>	Punctuality %	Target Punctuality	Reliability %	Target Reliability
High Speed services	87.6	90.0	99.0	99.2
London - Thames Valley services	90.8	92.0	99.1	99.0
Bristol suburban services	88.1	92.0	99.7	99.5
Devon services	94.0	92.0	99.5	99.5
Plymouth & Cornwall services	96.6	92.0	98.1	99.5
South Wales - South Coast services	90.1	92.0	99.2	99.5

Working with you to improve performance

- Timetable development process - meetings with Train Planners
- Summer strengthening plan (3 car and 4 car formations through Devon and Cornwall)
- Special events planning e.g. Tall Ships, Dawlish Air Show
- Improving information e.g. NTI screens at various stations
- Better access at stations e.g. Harrington Humps



Working together to shape the future

Working with:

Devon & Cornwall Rail Partnership	AVOCET Line Rail User Group
Cornwall Council	Tarka Rail Association
Devon County Council	St Germans Rail User Group
Torbay Council	Maritime Line Group
Plymouth City Council	Friends of Atlantic Coast Line
Cornwall Local Enterprise Partnership	Tamar Valley and Looe Valley Group
Cornwall Business Community	Riviera Line Forum
Plymouth Area Business Council	Devon & Cornwall Stations Group
Devon & Cornwall Business Council	Devon & Cornwall Timetable Group
Heart of South West LEP	Customer Panel (West)
Cornwall Business Council	Devon & Exe Rail Working Party
Peninsula Rail Task Force	South West Chamber of Commerce

Exeter - Exmouth

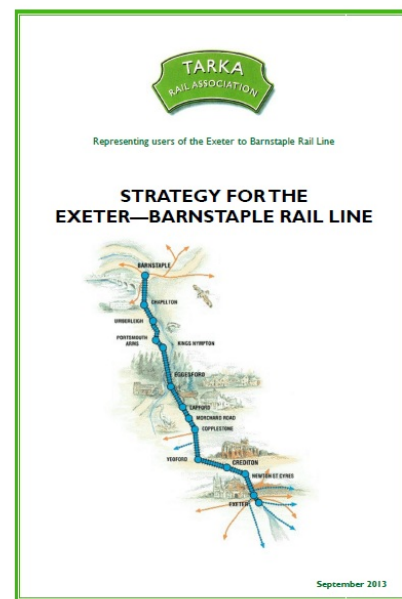
- Additional Sunday services Christmas and Summer – step to 7 day railway;
- Newcourt Station – plans advanced for opening in December 2014;
- Rugby World Cup 2015;
- ALRUG and Devon County Council station standards work;



Volunteers at St James' Park undertake station tidy up!

Exeter - Barnstaple

- Plans for strengthening services from December 2014;
- Working with Network Rail to capture benefits of line improvements;
- Working with Devon County Council and Tarka Rail Association on our future plans for the line.



Plymouth - Gunnislake

- Working with Devon County Council on extension to Tavistock;
- Promoting services / improving environment at stations.
- Potential project for re-branding of line



Liskeard - Looe

- Sunday services extended to October;
- The 'Munchtime Express' a success;
- Interchange at Looe onto horse and carriage!



Par - Newquay

- Working with the Police to improve safety and security for customers during busy periods
- Better information systems at Newquay;
- County wide planting scheme (working with Eden Project) including Newquay in Bloom!



Truro - Falmouth

- Fastest CR growing line nationally 2007-2011;
- Demonstration of what CR can do;
- Celebrated 150th anniversary of the line and 5th anniversary of passing loop;
- Tall Ships a success - need to build on this further for next time!



St Erth – St Ives

- Working with our partners to bring forward station improvements at St Erth;
- Improving customer service, information and revenue collection on the line;
- Summer strengthening and service improvements.



Riviera Line

- Enhanced service from December 2013
- Now 2 trains an hour to Paignton + 300 seats/day
- Local leadership through Torbay Council, Devon County Council, Devon & Cornwall Rail Partnership securing support as part of EU INTERREG project
- £390k towards stations improvements



Improving services

- Better connectivity to the far South West from December 2014;
- Wifi on HST fleet by end 2014;
- Re-seating plan provided extra 3,000 seats / day;
- Upgrading first class (by 2015);
- £146m for Cornwall main line package (DfT, CC, Cornwall LEP)
- Strengthening local services:
 - 1612 Paignton – Exeter
 - 0700 Barnstaple – Exeter
 - 0600 Penzance – Plymouth



Improving local services

Summer Strengthening:

- Cornish main line and branches;
- Main Line Saturday service Par – Exeter;
- Extra Sunday services Exeter – Exmouth (50% call at Ex St Davids);
- Exeter area local circuits at weekends (3 car).



The Way Forward

Funding

- Additional investment to support activities to September 2015
 - How work with CRPs?
 - How best to spend additional £?
 - How can support line plans?
- Extra £80k - £90k spread across CRPs for 2014/15
- Additional funds for 2015/16



Working with CRPs

Issue	Response
Resources / capacity to deliver	Secondment opportunities / additional staff support
Active support from all partners needed	FGW Project Fund to support priority projects and provide match funding
Flexibility	Small Projects Fund on request - £2,500
Keeping admin to a minimum	Annual Line Plan to capture progress and future work plan

Supporting projects

- Priorities put forward by CRPs at end June 2014;
- No prescription on projects but may include:
 - Extra investment at Stations
 - Additional marketing initiatives
 - Community events & activity
- Reviewing against line plans, community benefit, NPS scores, match funding opportunities



Summary

- Community Rail is important for FGW:
- It has supported strong growth on local services with wider benefits;
- Continued success brings challenges (how to cater for more growth / ensure performance) and there are also funding pressures;
- By working together we can tackle challenges and shape the future;
- FGW committed to future of the Community Rail;
- Support across FGW to help delivery and additional funding.



A scenic landscape photograph of rolling green hills and trees, with a yellow text overlay. The text is framed by horizontal yellow lines.

The greatest investment since Brunel.

To us, Network Rail's £7.5 billion is more than a great investment in our rail network. Like Brunel, we understand that to build a great railway is to galvanise and invigorate a whole region. The great man didn't just build a train line. He connected communities, encouraged trade and brought prosperity. 176 years later we're aiming to do the same. It means new rail lines for new high-speed electric trains. And modernised stations to accommodate the increased demand of a faster, smoother network.

BUILDING A GREATER WEST

The logo for First Great Western, featuring the word "First" in blue, a stylized pink and blue 'f' icon, and the words "Great Western" in blue.

Find out more at FirstGreatWestern.co.uk @FGW

#GreaterWest

Thank you – any questions?