

**Socially
responsible**

Re-development of:

Nuth Station



Yellow Team

- Introduction
- Analysis
- Overall concept
- Station concept
- Overall participation
- Conclusions
- Questions



Stationstraat

Stationsplein

Geitebeemdenweg

Nuth

Stationstraat

N298

E314

A76

N298

E314

A76

Agneshof

Agneshof

Burgemeester Beekersstraat

Trendstraat

Spoorstraat

A76

E314

Weverplein

Deweeverstr

thofstraat

Dwars

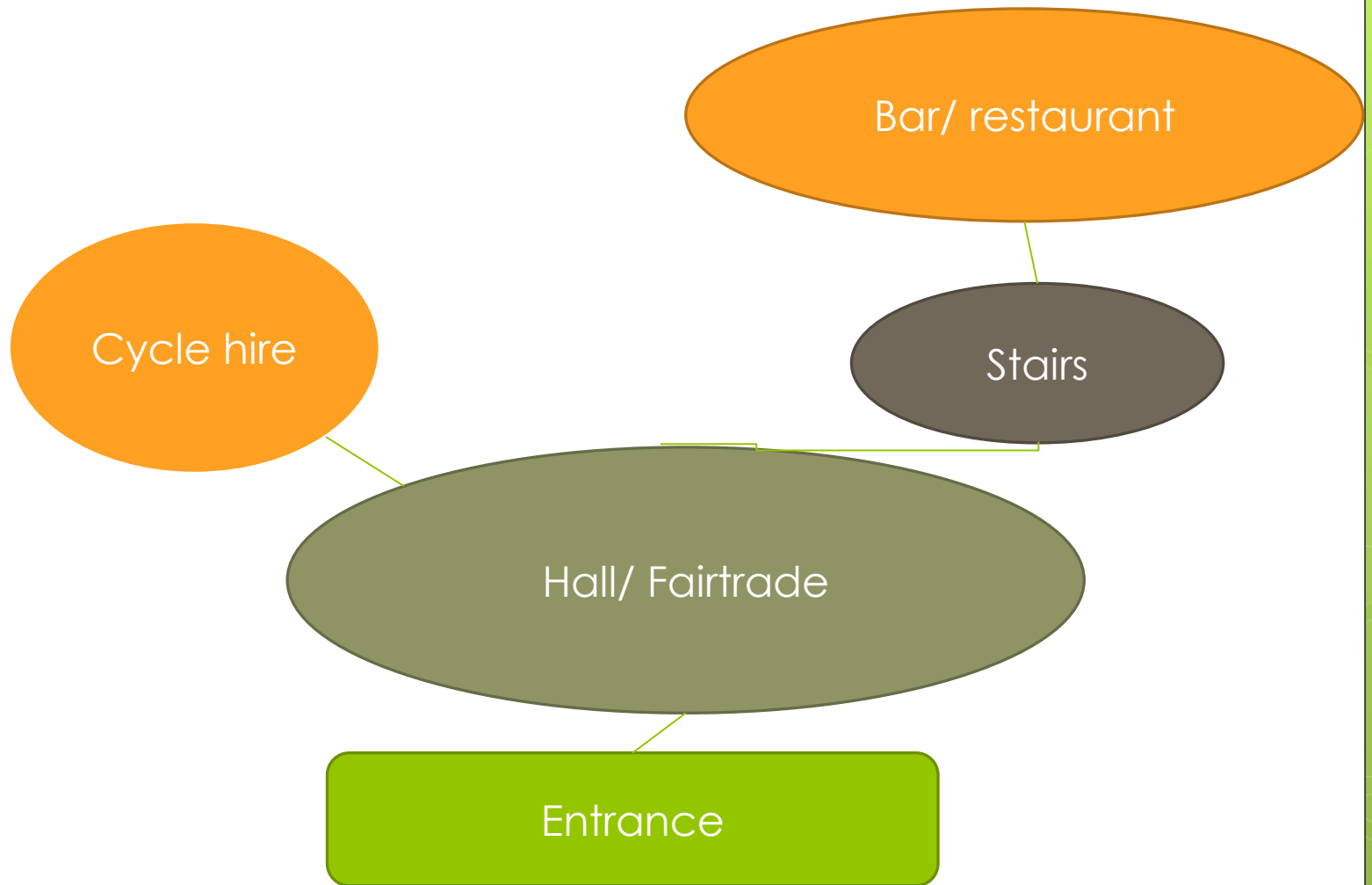
Weaknesses:

- Lack of signs for the shops
- Connections with the bus station
- Building not aesthetically pleasing
- Lack of information
- Visibility
- Social safety (cameras, Lighting)
- Accessibility for wheelchairs
- No Toilets
- Decreasing population (0.46% every year)

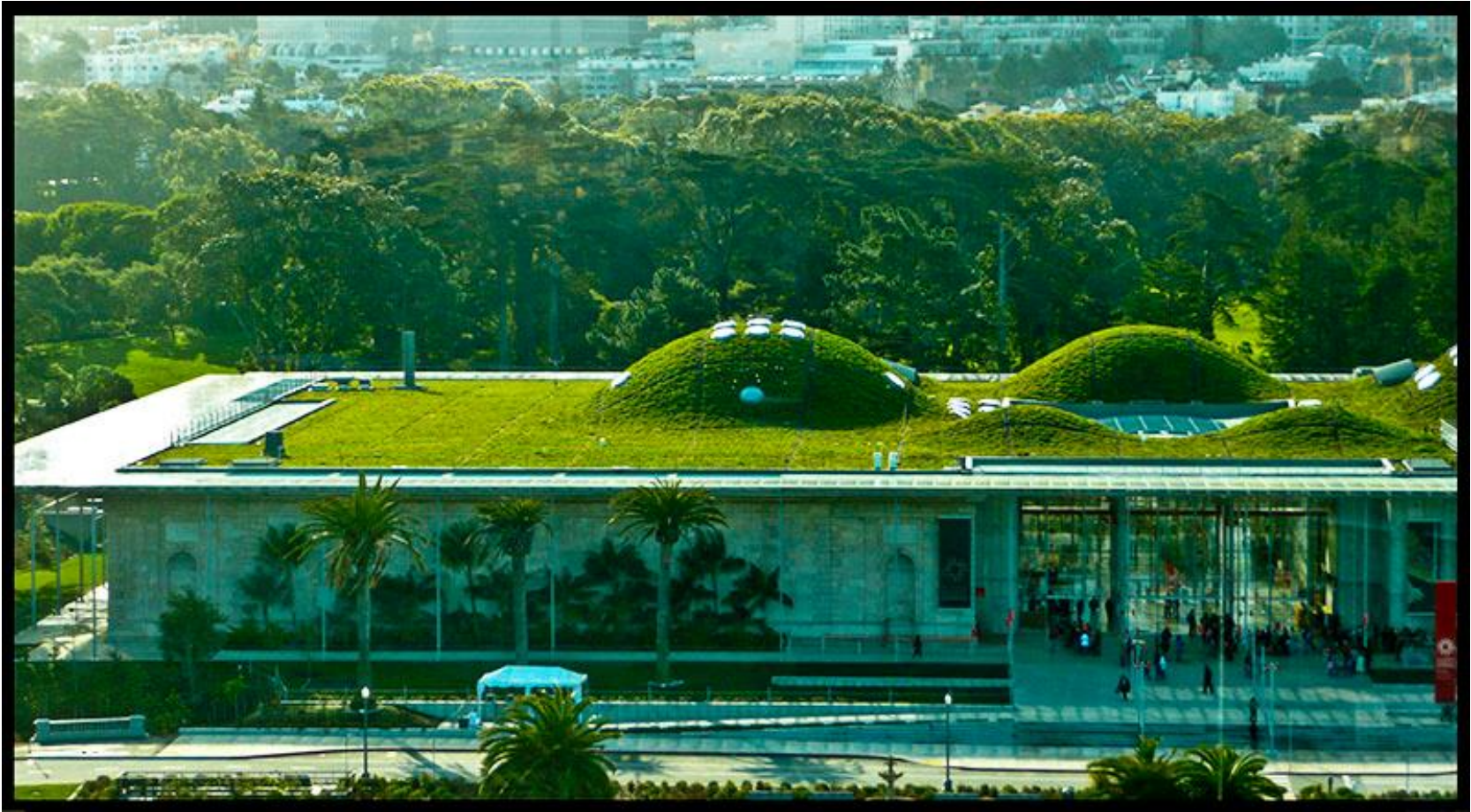
Strengths:

- Ecological surroundings
- Future bypass
- Optimal site location
- Connecting rail links to major cities
- Majority of travellers arrive by foot or bike

Overall Concept



Station concept



Design

- Grass roof
- Solar panels
- Utilising rain water for toilets
- Bridge
- Water moat

Facilities

- Fairtrade shop and café
- Integration of mining history
- Cycle hire
- Bus station
- Toilets

Local Engagement

- Plantation of flowers
- Art & sculptures by local artists
- Local children's art
- Eco tickets

Promotion

- Face painting
- Reward schemes
- Voice winner – signatures and performance
- Signatures by professional football players
- Speed dating on the train
- Pop up sale

Conclusion







Questions?